

Lines And Pairs – Pacific Division

A “lines and pairs” article will show the strengths and weaknesses of teams by comparing the Productivity Rating (PR) of their forward lines and defensive pairs to the league average. Some teams are strong up front, some teams have good third and fourth lines, and Chicago falls into neither of those categories.

The data in these charts were collected at approximately the mid-point of the 2022-23 season.

How Lines and Pairs are Identified

No forward line or defensive pair play together for the entire season, what with injuries and losing streaks. Players have been assigned to lines and pairs based on their statistics. As an example, the top three forwards for every team in terms of PR were declared their first line (F1), and the next three best forwards were declared their second line (F2).

Pairs and lines had their average PR calculated at the team level and at the league level. Team charts show how each team’s lines and pairs compare to the league average.

Atlantic Division – Line and Pair Total PR

Pacific						
Team	Pairs (PR)	Lines (PR)	L&P Total	NHL Rank Pairs	NHL Rank Lines	NHL Rank L&P
SEA	22.4	27.7	50.1	1	4	1
S.J	21.8	25.3	47.1	4	19	8
EDM	20.3	26.7	47.0	20	7	10
VGK	20.6	26.0	46.5	17	11	12
CGY	20.9	25.6	46.5	13	14	13
L.A	20.4	25.6	46.0	18	15	17
VAN	19.5	26.3	45.8	24	10	20
ANA	18.2	22.0	40.2	30	31	31

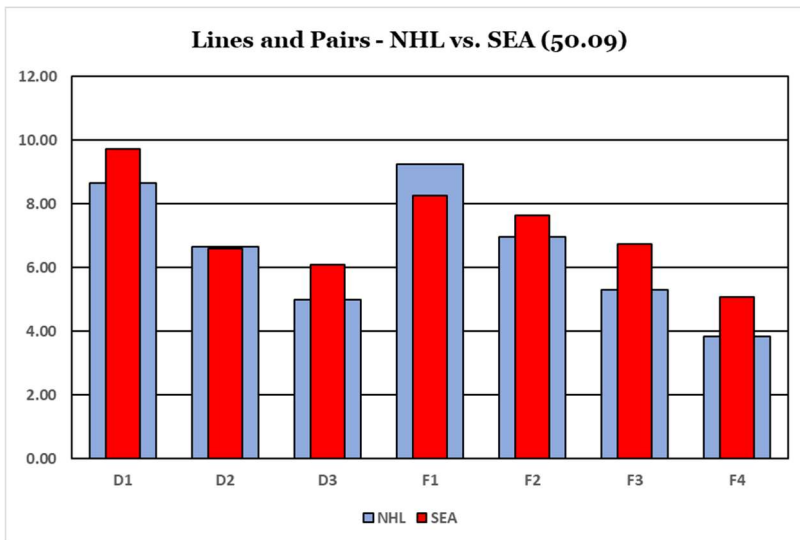
The Division Table shows each team’s total for Pairs, Lines and team (L&P Total). It also shows where the teams ranked in each category in the league. For example, the Calgary Flames ranked 13th in defensive pairs, 14th in forward lines and 13th overall.

In the rank columns, a team in the top three in the league will be in bold black font, while a team in the bottom three will be in bold red font.

Lines And Pairs – Pacific Division

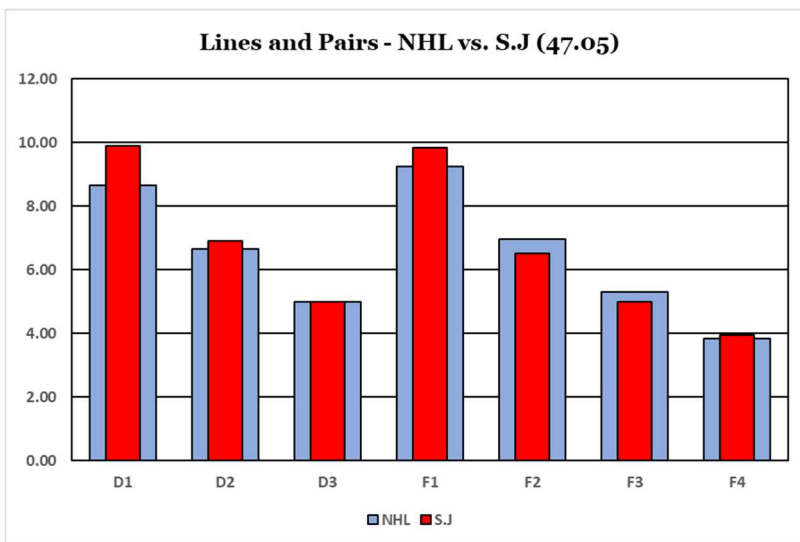
Line and Pair Charts

I will use the Seattle Kraken to explain the chart.



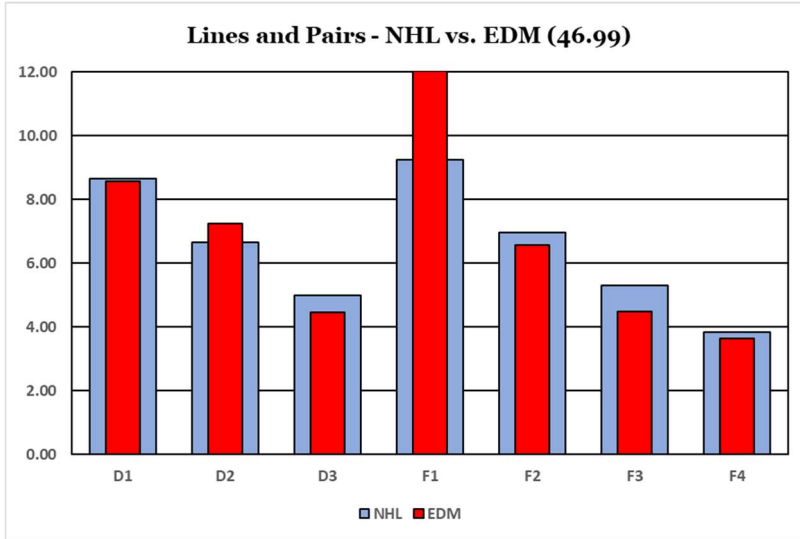
The league average ratings are the wide blue columns, while a team's ratings are shown in narrow red columns. Defense pairs are shown first and forward lines follow. The chart title shows the team's total line and pair rating: 50.09 for Seattle (1st in the league).

Seattle has good defense and great depth at forward, with their only deficiency being a below average F1.

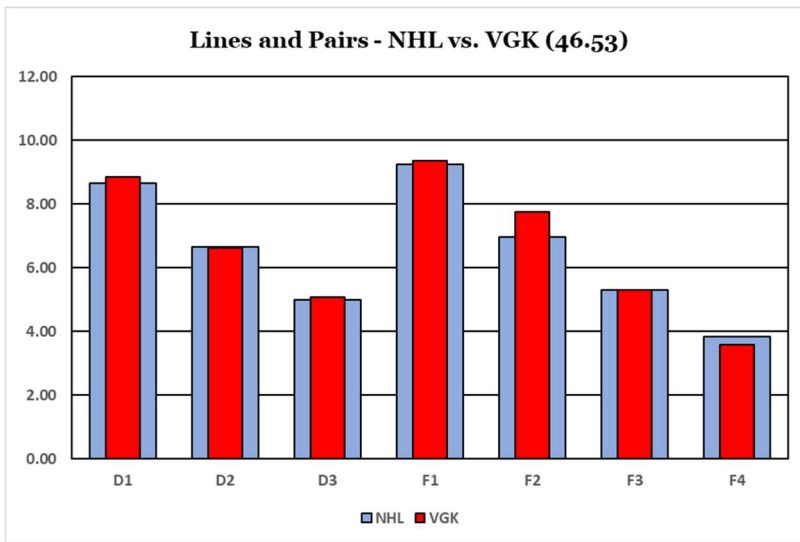


Comparing the Sharks to the Kraken produces interesting results. Defensive pairs are somewhat similar, with the Sharks being better (thanks to EK65). The Shark forwards are the opposite of the Kraken, with a good F1 but with below average F2 and F3 and a below Seattle F4.

Lines And Pairs – Pacific Division

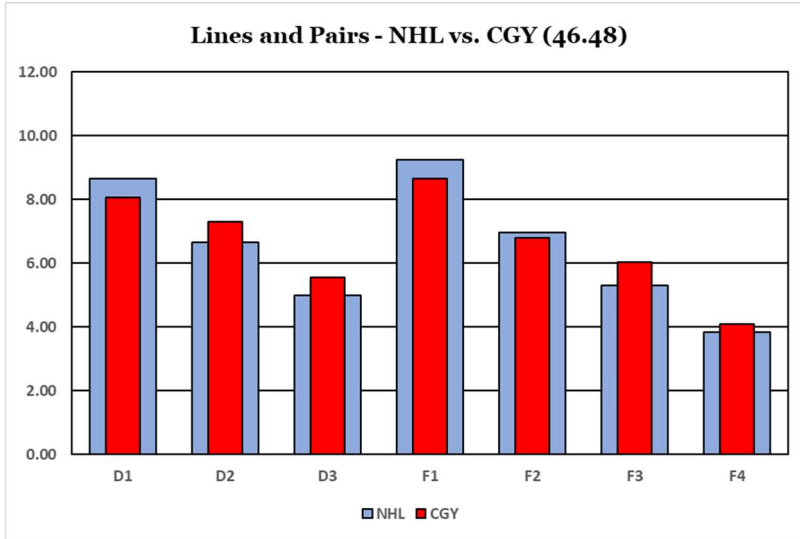


The picture says it all. Edmonton is a one-line team with a little assistance from the defence. They are below average at D3, F2, F3 and F4.

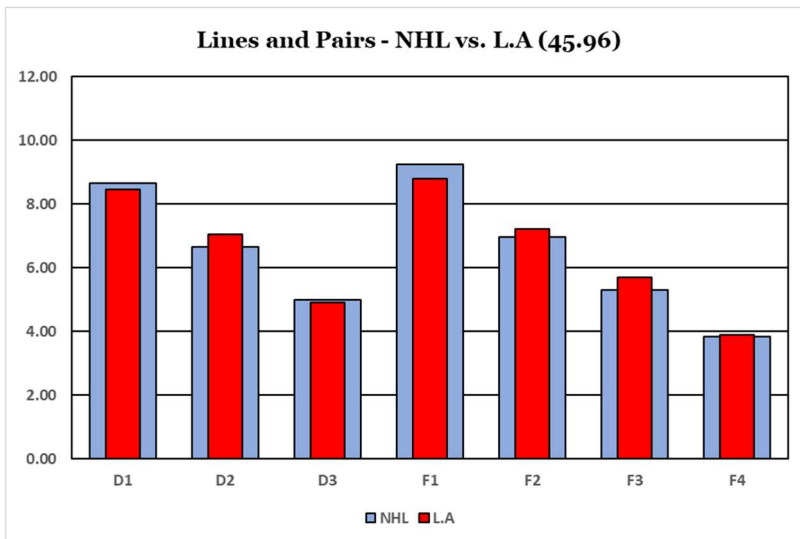


The Knights of Vegas are very close to average in all defensive pairs and forward lines except for F2, which is well above average.

Lines And Pairs – Pacific Division



Calgary is one of those teams that lacks up-front talent but has good depth. They are below average at F1 and D1, average at F2, and above average everywhere else.



Strength in the middle of the lineup, mediocrity in the back end, below average at the top. Not exactly the typical configuration of a Stanley Cup contender.

Stapled To The Bench